

# RETAIL PROPERTY FOR SALE OR LEASE

## Adjacent to Lee Traffic Circle (Rt. 4 & Rt. 125)



## Gas Convenience Store & Real Estate

# 68 Concord Road

Lee, New Hampshire



### Property Data

- Redevelopment & Expansion Potential.
- Fuel, Liquor, Food & Beverage Sales
- Acreage: 3.7±
- Frontage on Rt. 4: 400± feet
- Building Size: 2841± SF
- Two Existing Retail Units, Open Lot Area
- Real Estate Taxes: \$13,775 (2007)
- Type of Construction: Wood
- Ceiling Height: 9'
- Roof: Asphalt Shingle Gable
- Heat Source: Gas FHA
- Sprinklers
- Traffic Count: 17,000 (Rt.4)  
19,000 (Rt.125)
- Excellent Visibility

Call for Pricing

### Contact information

Chuck Goss  
Phone 603.431.3001 x 234  
cgoss@nainorwoodgroup.com  
Scott Reid  
Phone 603.431.3001 x 240  
sreid@nainorwoodgroup.com

**NAI** Norwood Group

Commercial Real Estate Services, Worldwide.



Individual members of



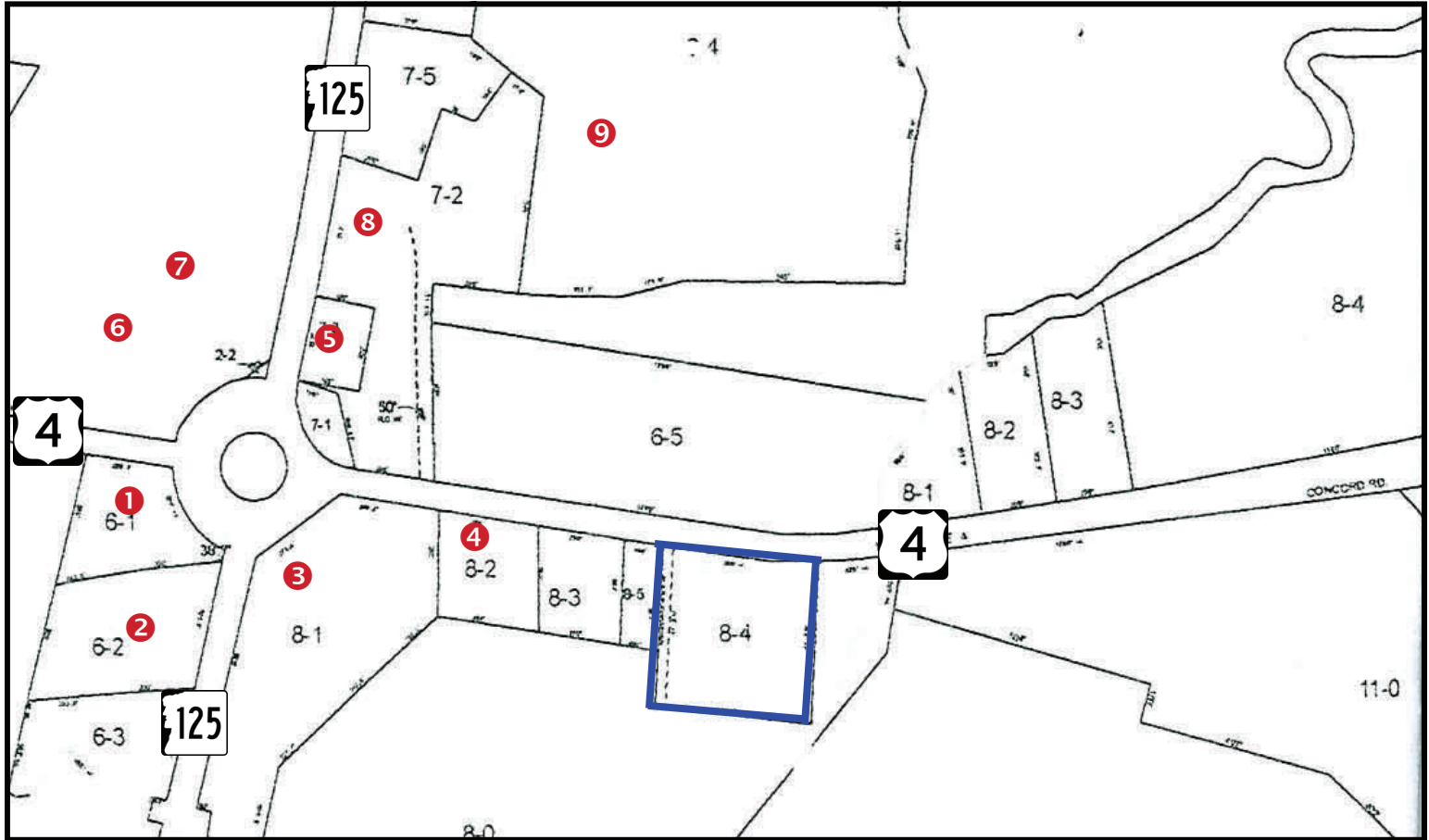
The information contained herein has been given to us by the owner of the property or other sources we deem reliable, we have no reason to doubt its accuracy, but we do not guarantee it. All information should be verified prior to purchase or lease.

100 Market Street, Suite 200  
Portsmouth, NH 03801  
nainorwoodgroup.com

# Gas Convenience Store & Real Estate

## 68 Concord Road

Lee, New Hampshire



- ① McDonald's
- ② Sunoco
- ③ Mobil
- ④ Dunkin Donuts
- ⑤ Wendy's
- ⑥ Ace Hardware (Grocery & Plaza)
- ⑦ Market Basket
- ⑧ Walgreen's (Opening 2009)
- ⑨ Wentworth Douglas Hospital Facility

